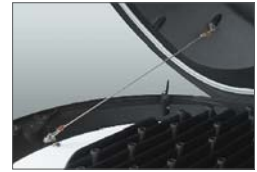


DECOSTREET

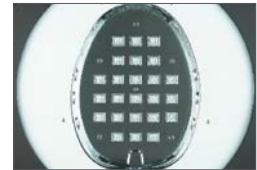


LB9407

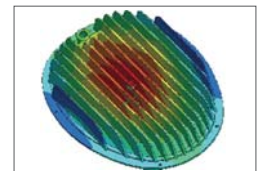
CREE LED
 POWER: 30W
 VOLTAGE: 90-305VAC/50-60Hz
 POWER FACTOR: >0.95
 WORKING TEMP(°C): -20~50°C
 LED QUANTITY: 24 pcs
 CRI: 70
 OUTPUT: 2250lm/ 3000K
 FIXING POLE: Ø60mm
 INSTALLATION HEIGHT: 3-4M
 LED LIFE TIME: 30,000Hrs
 Material: Die-casting Aluminum



Wire rope lock, increase the safety of fitting



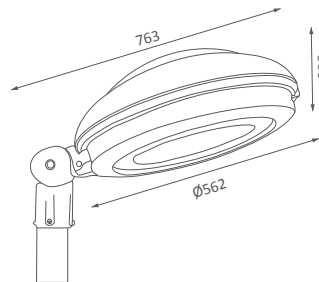
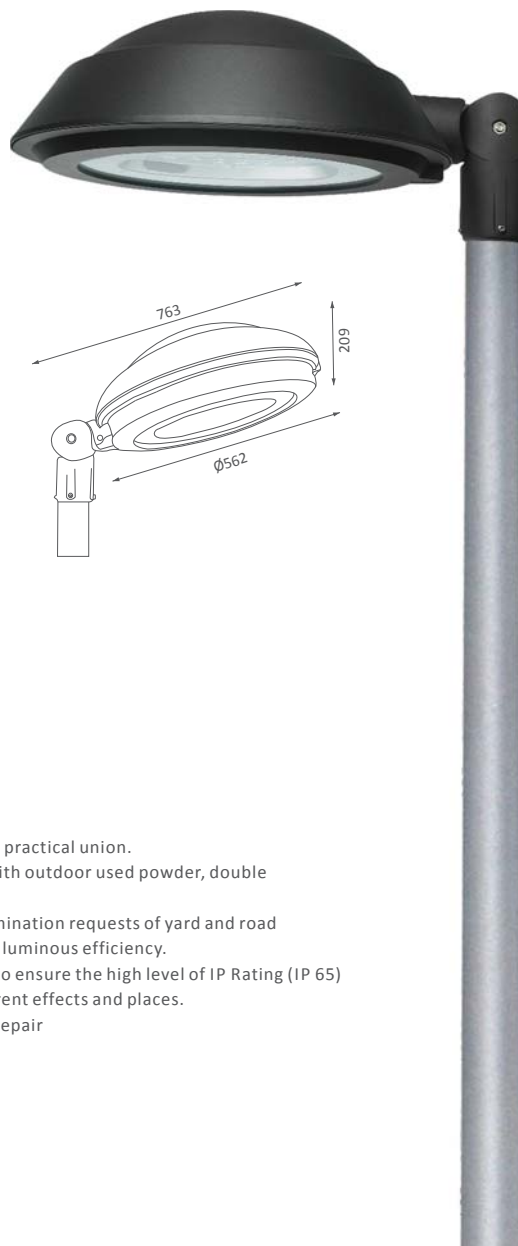
Scientific secondary light distribution



Thermal simulation figure

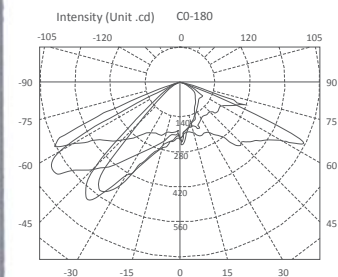
LB9408

CREE LED
 POWER: 60W
 VOLTAGE: 90-305VAC/50-60Hz
 POWER FACTOR: >0.95
 WORKING TEMP(°C): -20~50°C
 LED QUANTITY: 48 pcs
 CRI: 70
 OUTPUT: 4500lm/ 3000K
 FIXING POLE: Ø60mm
 INSTALLATION HEIGHT: 4-6M
 LED LIFE TIME: 30,000Hrs
 Material: Die-casting Aluminum



DESCRIPTION

- Classical industrial design, perfect aesthetic and practical union.
- High pressure aluminum die cast body, coated with outdoor used powder, double anti-corrosion to ensure long life span
- Scientific optical lens design to satisfies the illumination requests of yard and road
- Ultrawhite tempered glass diffuser, improve the luminous efficiency.
- Using silicon rubber leakproof structure design to ensure the high level of IP Rating (IP 65)
- Multiple installations to satisfy the uses of different effects and places.
- Button design and safety rope is convenient for repair

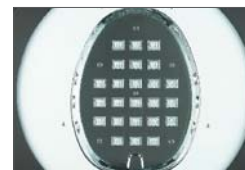


LB9415

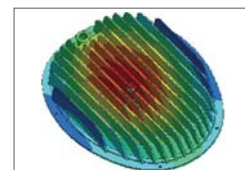
CREE LED
 POWER: 30W
 VOLTAGE: 90-305VAC/50-60Hz
 POWER FACTOR: >0.95
 WORKING TEMP(°C): -25~50°C
 LED QUANTITY: 24 pcs
 CRI: 70
 OUTPUT: 2250lm/ 3000K
 FIXING POLE: Ø60mm
 INSTALLATION HEIGHT: 3-4M
 LED LIFE TIME: 30,000Hrs
 Material: Die-casting Aluminum



Wirerope lock, increase the safety of fitting



Scientific secondary light distribution

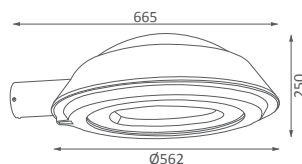


Thermal simulation figure



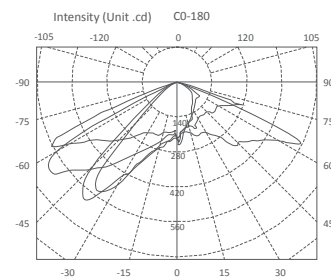
LB9416

CREE LED
 POWER: 60W
 VOLTAGE: 90-305VAC/50-60Hz
 POWER FACTOR: >0.95
 WORKING TEMP(°C): -20~50°C
 LED QUANTITY: 48 pcs
 CRI: 70
 OUTPUT: 4500lm/ 3000K
 FIXING POLE: Ø60mm
 INSTALLATION HEIGHT: 4-6M
 LED LIFE TIME: 30,000Hrs
 Material: Die-casting Aluminum



DESCRIPTION

- Classical industrial design, perfect aesthetic and practical union.
- High pressure aluminum die cast body, coated with outdoor used powder, double anti-corrosion to ensure long life span
- Scientific optical lens design to satisfies the illumination requests of yard and road
- Ultrawhite tempered glass diffuser, improve the luminous efficiency.
- Using silicon rubber leakproof structure design to ensure the high level of IP Rating (IP 65)
- Multiple installations to satisfy the uses of different effects and places.
- Button design and safety rope is convenient for repair



LB9409

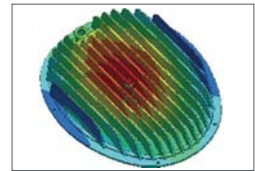
CREE LED
 POWER: 30W
 VOLTAGE: 90-305VAC/50-60Hz
 POWER FACTOR: >0.95
 WORKING TEMP(°C): -25~50°C
 LED QUANTITY: 24 pcs
 CRI: 70
 OUTPUT: 2250lm/ 3000K
 FIXING POLE: Ø60mm
 INSTALLATION HEIGHT: 3-4M
 LED LIFE TIME: 30,000Hrs
 Material: Die-casting Aluminum



Wire rope lock, increase the safety of fitting



Scientific secondary light distribution

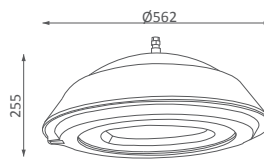


Thermal simulation figure



LB9412

CREE LED
 POWER: 60W
 VOLTAGE: 90-305VAC/50-60Hz
 POWER FACTOR: >0.95
 WORKING TEMP(°C): -20~50°C
 LED QUANTITY: 48 pcs
 CRI: 70
 OUTPUT: 4500lm/ 3000K
 FIXING POLE: Ø60mm
 INSTALLATION HEIGHT: 4-6M
 LED LIFE TIME: 30,000Hrs
 Material: Die-casting Aluminum



DESCRIPTION

- Classical industrial design, perfect aesthetic and practical union.
- High pressure aluminum die cast body, coated with outdoor used powder, double anti-corrosion to ensure long life span
- Scientific optical lens design to satisfies the illumination requests of yard and road
- Ultrawhite tempered glass diffuser, improve the luminous efficiency.
- Using silicon rubber leakproof structure design to ensure the high level of IP Rating (IP 65)
- Multiple installations to satisfy the uses of different effects and places.
- Button design and safety rope is convenient for repair

